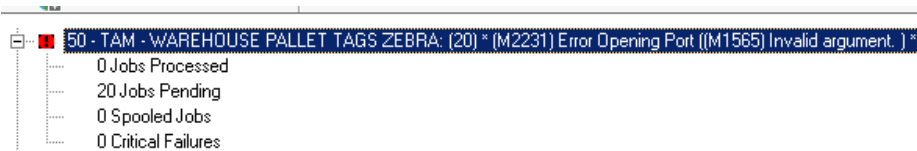


Error M2231 Error Opening Port and Error M1565 Invalid Argument

Message

The LPS Status Client displays one or more printers in an error state. The printers in question are configured with TCP/IP connection types, jobs are pending instead of printing, and the following error is displayed:

(M2231) Error Opening Port ((M1565) Invalid argument.)



Article Number

2017030

Versions

All supported LPS family product versions

Environment

All supported LPS environments

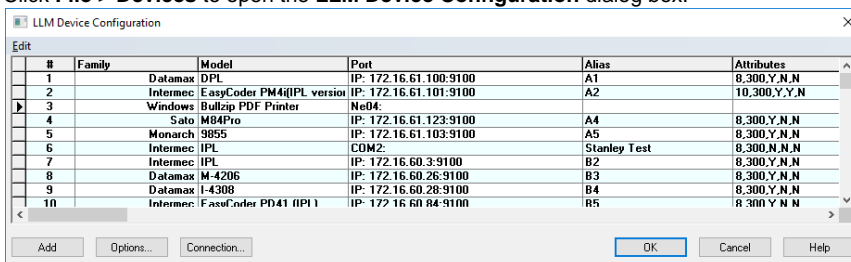
Explanation

During the configuration of the printer within the Loftware LLM Device Configuration grid, an unexpected character has been included with the TCP/IP address or Port information when performing a copy/paste operation while entering the printer information.

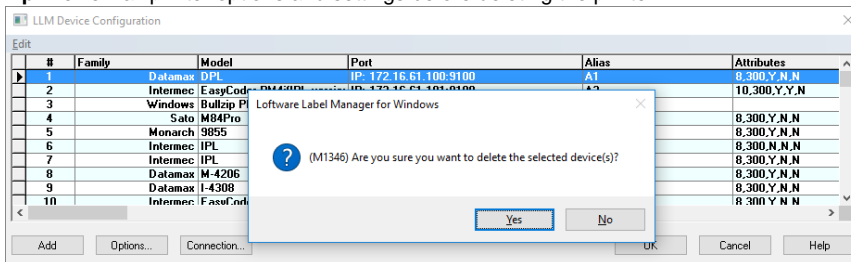
Solution

Delete the specific printer from the **LLM Device Configuration** grid, then add the same printer by **manually** typing the information to avoid any unexpected characters.

1. Open Design 32.
2. Click **File > Devices** to open the **LLM Device Configuration** dialog box.



3. Click the printer causing the error to select it, and then press Delete.
Tip: Review all printer options and settings before deleting the printer.



4. In the confirmation dialog box, click **Yes**. The printer line is now blank.
5. Add the printer back in by entering the Family, Model, Port, and Alias name. Be sure not to use any illegal characters.
6. Configure the options for your printer.
7. Stop and start the print server to restart the jobs in the pending directory.

Related Articles

Page: The Loftware Print Server Service on Local Computer Started and then Stopped

- kb-error-message

Page:SAP Interface Log Indicates an "Incomplete request" Error when Processing a Stacked RDI File

- kb-error-message

Page:Error M1233 Password Serial Number Error

- kb-error-message

Page:Error M4756 _PRINTERNUMBER Value is Not Valid and M4757 Number is Outside Key Limit

- kb-error-message

Page:LCD on Zebra Printer Displays OUT OF MEMORY STORING GRAPHIC

- zebra
- kb-error-message