

# Configuration Utility: Directory Setup

## Description

The Directory Setup is where you can configure your Loftware Print Server (LPS) Scan Directory path(s).

## Information

### Adding a Scan Directory

You are required to first create a folder before you can add it as a scan directory using Windows Explorer.

## Article Number

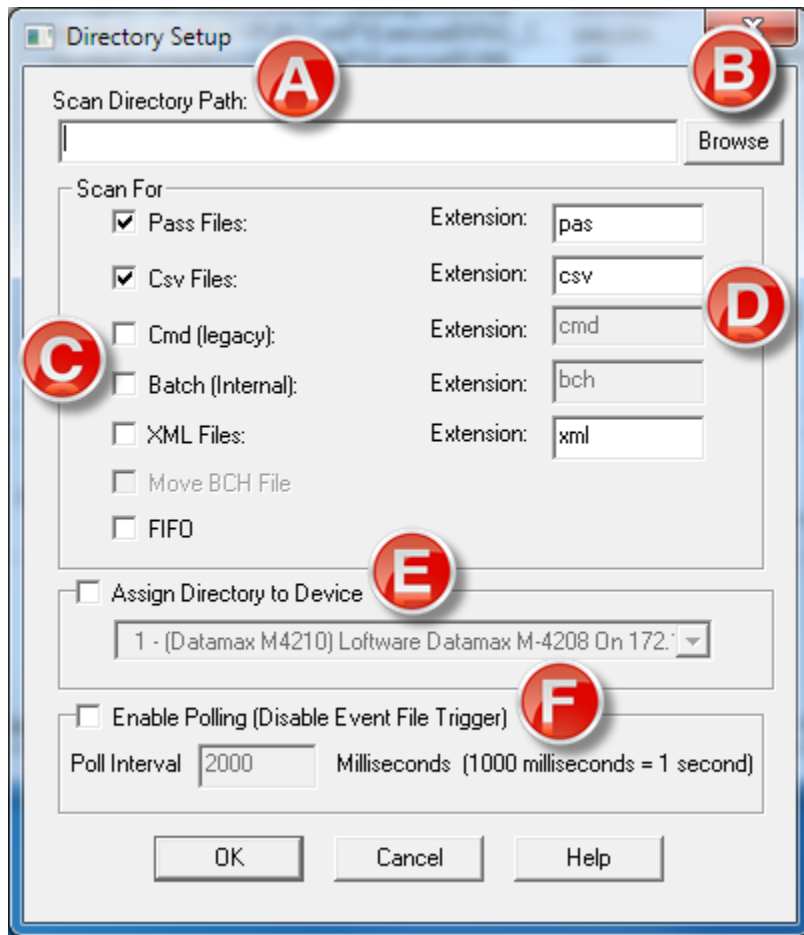
2017084

## Versions

LPS 10.2

## Environment

Any supported LPS Family product environment



### Do Not Write Data Directly to the Scan Directories

It is highly recommended not to write data to a file directly in the WDdrop or other scan directories. Writing to a file in a scan directory could cause your job to become orphaned in the OLEBP directory where the corresponding (.lpj) is missing.

Directory Setup	Description
-----------------	-------------

A	Scan Directory Path	<p>The directory or directories where print requests are configured for using the File Interface. Can be located on any network drive and may use more than one directory. Must use UNC path if the directory is not local. Both your front-end application and the Loftware Print Server (LPS) must have Read/Write access.</p> <div data-bbox="781 457 1066 695" style="border: 1px solid black; padding: 5px; margin-top: 10px;"> <p>Simple systems that do not have high throughput requirements can simply use the default of one scan directory.</p> </div>
B	Browse	Used to locate the scan directory. Recommended to eliminate errors when typing the scan directory path manually.
C	Scan For	Identifies the file format that will be accepted by LPS as a valid print request.
D	Extension	<p>Specifies the file extension LPS will look/scan for, which include but are not limited to .pas, .csv, .bch, and .xml files.</p> <p><b>FIFO (First In First Out):</b> If enabled, files are processed in the order in which they are received.</p> <div data-bbox="781 1276 1066 1465" style="border: 1px solid black; padding: 5px; margin-top: 10px;"> <p><b>Legacy Settings</b></p> <p>This field is not used with CMD (Legacy) settings.</p> </div>
E	Assign Directory to Device	Allows you to assign a dedicated printer to a scan directory. Used if there is no print number command in a print request. Files dropped with this setting enabled are sent to the assigned printer. Overrides file printer designation.

F	Enable Polling	<p>LPS remains idle until the OS communicates that the contents of the scanned directory have changed. <b>Enable Polling</b> is disabled by default, however polling must always be enabled for shared network drives. If you have Polling disabled and discover that LPS is not processing your files, it is highly recommended to enable Polling and set the interval to the appropriate millisecond you intend to poll the directory.</p> <p>2000 millisecond (2 seconds) is the default. Enabling Polling overrides OS Event File trigger.</p>
---	----------------	--

## Related Articles

Page:Configuration Utility: Directory Setup

- [setup](#)
- [kb-information-article](#)
- [scanpath](#)
- [configuration](#)
- [directory](#)

Page:Unable To Obtain UNC Equivalents When Starting LPS (Formerly WatchDog-NT)

- [watchdog-nt](#)
- [layoutfiles](#)
- [autoconvert](#)
- [uncpath](#)
- [labelfiles](#)
- [kb-troubleshooting-article](#)
- [scanpath](#)
- [unc](#)