

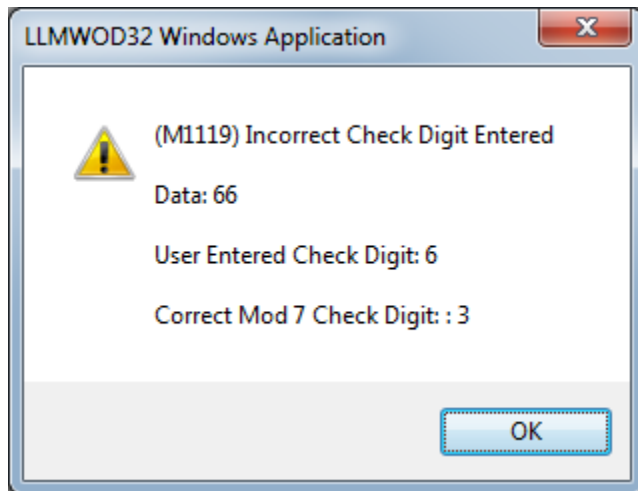
Error M1119 Incorrect Check Digit Entered and M616 Failed Job

Message

When printing a label with a barcode, an M1119 and/or an M616 error is encountered, similar to the following:

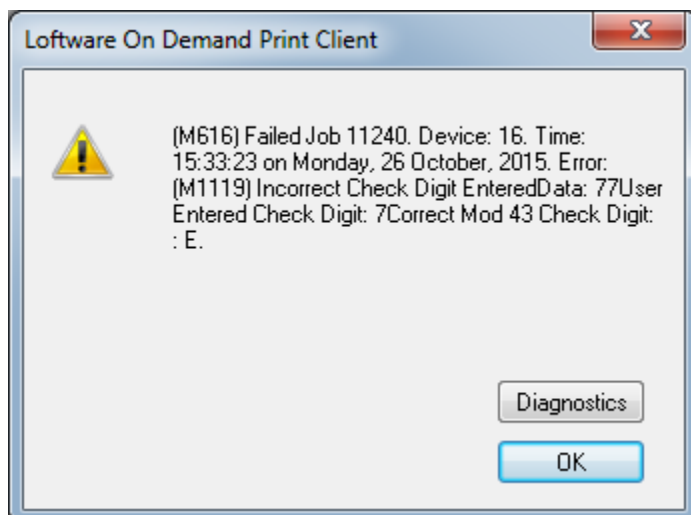
On Demand Print

(M1119) Incorrect Check Digit Entered
Data: #
User Entered Check Digit: #
Correct Mod # Check Digit: #



On Demand Print Client

(M616) Failed Job #####. Device #.
Time: ##:##:## on Date.
Error: (M1119) Incorrect Check Digit Entered
Data: #
User Entered Check Digit: #
Correct Mod # Check Digit: #



Article Number

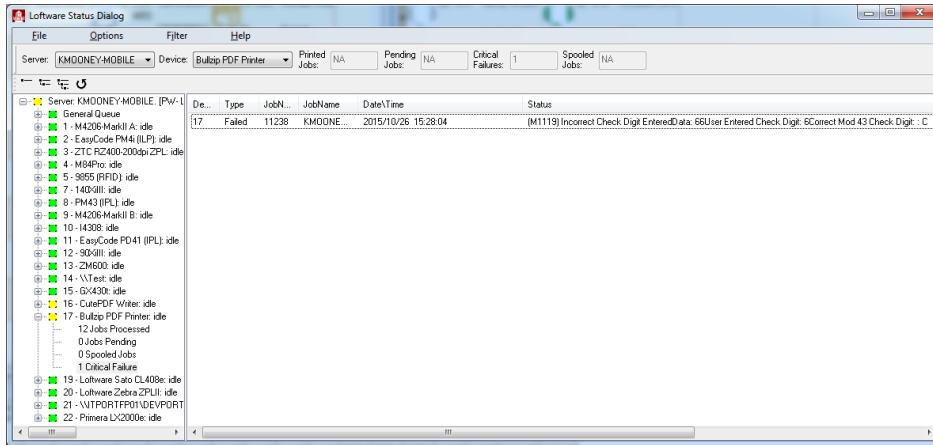
2017055

Versions

All supported LPS family product versions.

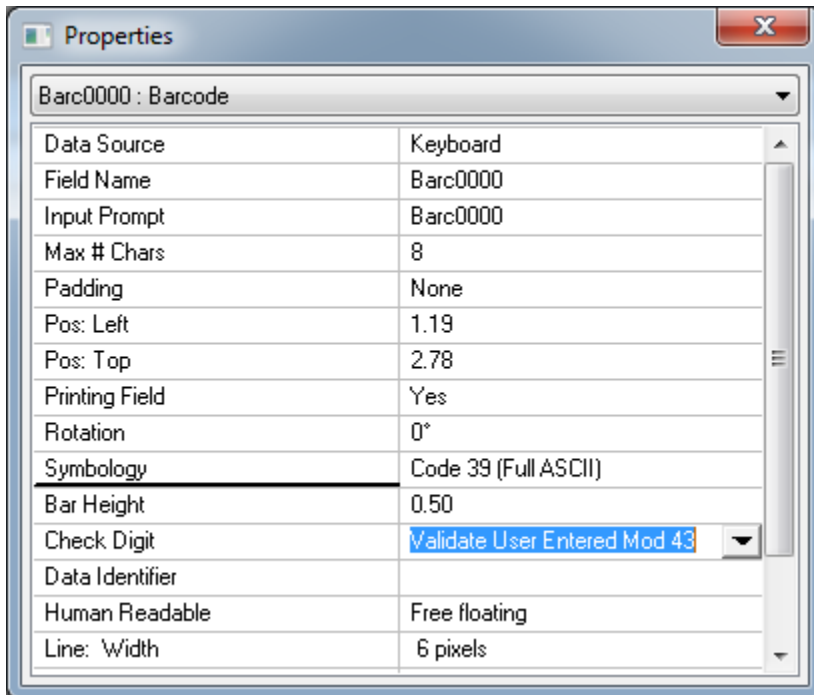
Environment

Any supported LPS family product environment



Explanation

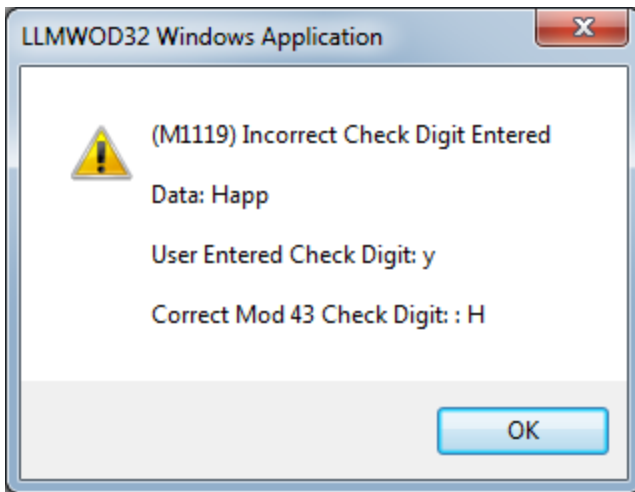
This error occurs when there is a barcode field on the label with a Check Digit setting of "Validate User Entered...". With this type of setting, Loftware is expecting the actual Check Digit to be sent with the data for the barcode. Loftware looks at the last character sent in the barcode's value and expects this to be the Check Digit. Loftware then performs a check digit calculation on its own based upon all characters but the last one sent in the barcode's value. Loftware then compares its calculated check digit to the last character in the data. If they do not match, the error message is encountered.



Example

Using the barcode setting in the previous image, the word "Happy" is sent to as data to encrypt in the barcode. The following will happen during Loftware's processing:

1. Loftware takes the last character of "y" as the user entered Check Digit.
2. Loftware then calculates a Code 39 (Full ASCII) check digit based upon all characters in the data except the last. In this case the characters "Happ" would require a check digit of "H".
3. Loftware then compares the user defined Check Digit of "y", to its own calculated check digit of "H". When they do not match, the error is encountered.



Solution

There are two possible solutions to this error:

- Make certain the last character being sent to the barcode is a valid Check Digit for the actual value you wish to encode.
For example: To encode "Happy", you would need to send the value "HappyH", as "H" is the proper check digit for the value "Happy".
- Change the Check Digit on the barcode to something other than "Validate User Entered..."

Related Articles

Page: The Software Print Server Service on Local Computer Started and then Stopped

- [kb-error-message](#)

Page: SAP Interface Log Indicates an "Incomplete request" Error when Processing a Stacked RDI File

- [kb-error-message](#)

Page: Error M1233 Password Serial Number Error

- [kb-error-message](#)

Page: Error M4756 _PRINTERNUMBER Value is Not Valid and M4757 Number is Outside Key Limit

- [kb-error-message](#)

Page: LCD on Zebra Printer Displays OUT OF MEMORY STORING GRAPHIC

- [zebra](#)
- [kb-error-message](#)