

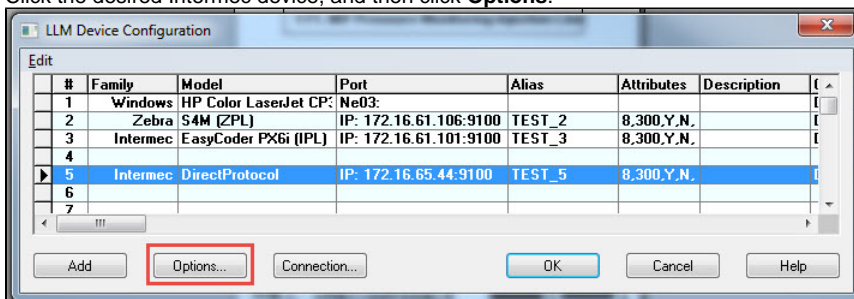
# How to Reprint Last Label on Intermec Printers using Direct Protocol Language

## Description

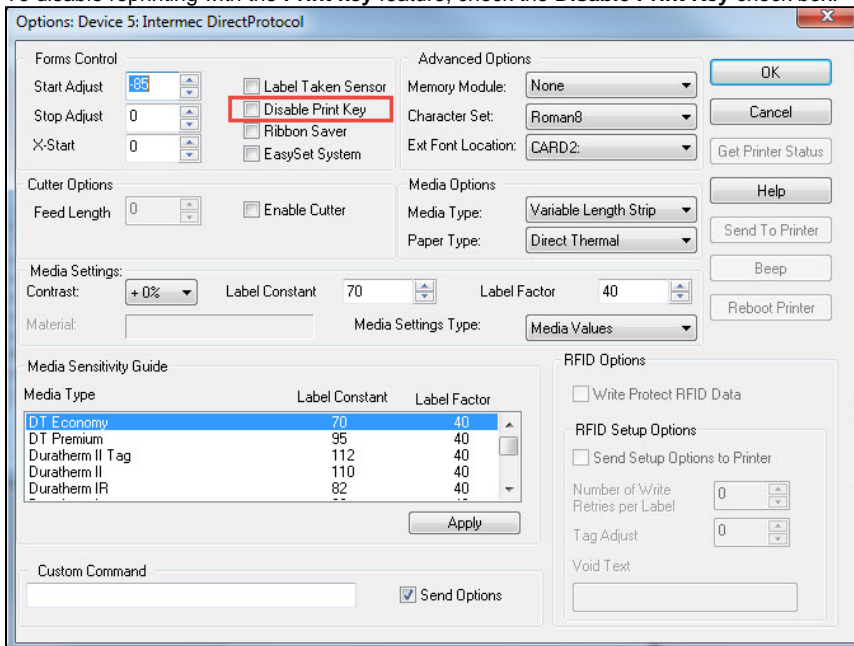
Many Intermec printers have a **Print** button on the printer's front panel which can be used to perform several functions such as feeding media, pause printing, and resume printing, etc. On Intermec printers configured to use the Direct Protocol language, there is a **Print key** feature which, when enabled, can be used to reprint an identical copy of the last label from the previous print job simply by pressing the **Print** button. This feature may prove useful when an out-of-paper, out-of-ribbon condition, or a media jam prevents printing. However, in some environments, such as an environment where each item must be uniquely numbered, the ability to generate an identical copy of a label may be undesirable. The **Print key** feature can be controlled within any Loftware Intermec printer driver specified for use with Direct Protocol or Fingerprint languages.

## How to enable/disable the Print key feature for reprinting labels on Intermec printers containing this feature

1. In Design 32, click **File > Devices** to display the **LLM Device Configuration** grid.
2. Click the desired Intermec device, and then click **Options**.



3. To enable reprinting with the **Print key** feature, clear the **Disable Print Key** check box. To disable reprinting with the **Print key** feature, check the **Disable Print Key** check box.



4. Click **OK** to close **Options**.
5. Click **OK** to close the **LLM Device Configuration** grid and enable any changes.

## Article Number

2017100

## Versions

All supported LLM versions

## Environment

All supported environments

## Related Articles

Page:LPS Client Supported Operating Systems

- os
- operating
- lps
- supported
- client
- demand
- on
- server
- software
- kb-how-to-article
- system
- print

Page:Upgrading LWA Windows Server 2008 R2 Operating System to Windows Server 2016 Operating System

- lwa
- kb-how-to-article
- redirect

Page:Voice Pick Code Script for Mixed Pallet Labeling

- voice
- voicepick
- pti
- pick
- 7
- milestone
- kb-how-to-article
- code

Page:Cannot Print Greater-Than (>) Characters in Code-128 Barcode When Using Zebra Printer

- greater-than
- zebra
- kb-how-to-article
- barcode
- 128

Page:Using Datamatrix Format ID and Error Correction Level settings

- datamatrix
- format
- kb-how-to-article
- error