

BCH files saved with UTF-8 encoding fail to print

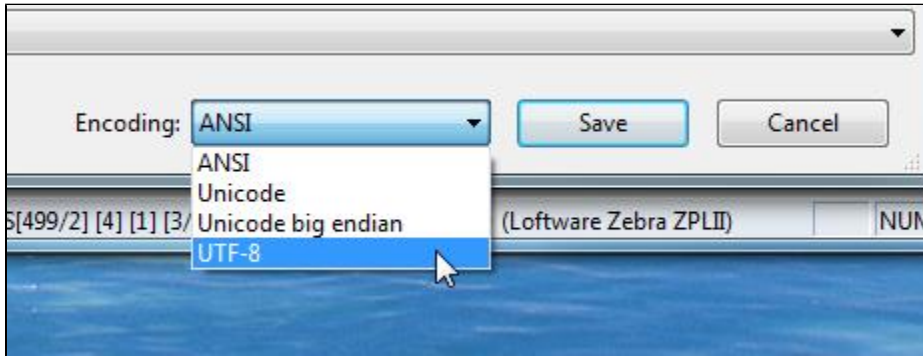
Description

BCH files (*.BCH) saved with UTF-8 encoding fail to print.

NOTE: In version 10.1.1.51, all resubmitted jobs from the Loftware Status Client program are sent in UTF-8 format.

To reproduce

When creating sample BCH files from the Design32 application, or saving them from any application, you have the option of multiple encodings. Not all of these encodings will process properly. Specifically .BCH files are saved with UTF-8 encoding, which while common for .PAS and .XML files, does not work for .BCH files.



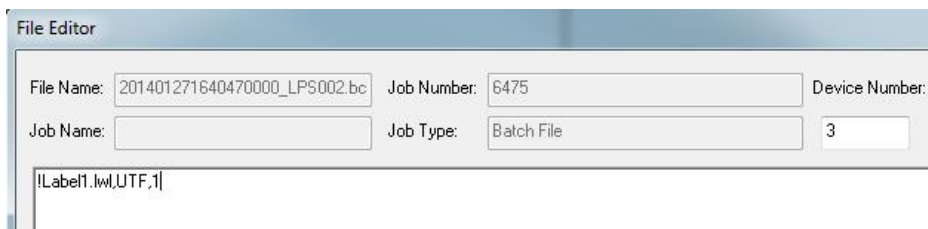
The error you will see is "Error Reading in Label"

Device	Type	JobNum	JobName	Date\Time	Status
3	Failed	6475		2014/01/27 16:40:47	Error Reading in Label

LPS logging shows that the job failed but does not show any reason for the failure

```
[2014/01/27 16:40:47.0409] Displaying all files in Scan Directory 'C:\Program Files (x86)\Loftware Labeling\WDDrop'  
[2014/01/27 16:40:47.0409] \WDScan.dtl  
[2014/01/27 16:40:47.0410] (M4878) $SPM$ - Job #6475 has Totally Failed!
```

The file editor does not show any issues.



When the same file is saved with ANSI encoding, as shown below:

Article Number

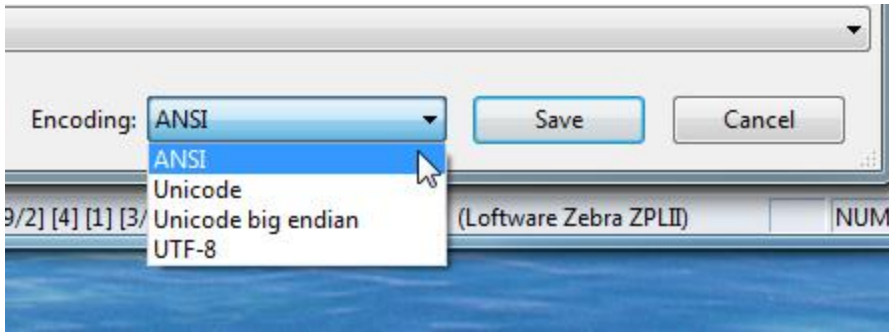
2013105

Versions

LPS/LLM , 10.1.1.51

Environment

All supported installation environments.



The file is prints successfully.

Device	Type	JobNum	JobName	Date\Time	Status
3	Failed	6475		2014/01/27 16:40:47	Error Reading in Label
3	Printed	6476		2014/01/27 16:46:21	(M5492) Printed

```
[2014/01/27 16:46:21.0890] Displaying all files in Scan Directory 'C:\Program Files (x86)\Software Labeling\WDDrop'
[2014/01/27 16:46:21.0890] wDScan.dir
[2014/01/27 16:46:21.0890] $SPM$ - Job #6476 has Printed!
[2014/01/27 16:46:21.0890] Displaying all files in Scan Directory 'C:\Program Files (x86)\Software Labeling\WDDrop'
[2014/01/27 16:46:21.0890] wDScan.dir
```

Solution

Always save .BCH files using ANSI encoding.

Related Articles

Page: [Batch File Printing \(Loftware Print Server Family Knowledge Base\)](#)

- [bch](#)
- [batch](#)
- [kb-how-to-article](#)
- [file](#)

Page: [BCH files saved with UTF-8 encoding fail to print \(Loftware Print Server Family Knowledge Base\)](#)

- [drop](#)
- [kb-troubleshooting-article](#)
- [utf-8](#)
- [ansi](#)
- [bch](#)
- [file](#)

Page: [Using Custom Batch Delimiters \(Loftware Print Server Family Knowledge Base\)](#)

- [bch](#)
- [csv](#)
- [batch](#)
- [delimiter](#)
- [kb-how-to-article](#)
- [custom](#)