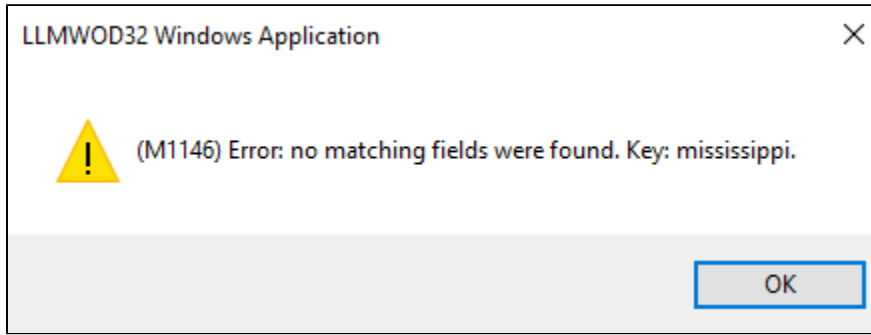


# Error M1146 No Matching Fields Were Found

## Problem

When using On-Demand Print 32, On-Demand Print Client, Range Print 32, or the file drop interface to the Lofware Print Server, the following error occurs:

(M1146) Error: no matching fields were found. Key: <xxxxx>.



## Article Number

2017062

## Versions

Loftware Label Manager and Lofware Print Server versions 8.x or higher

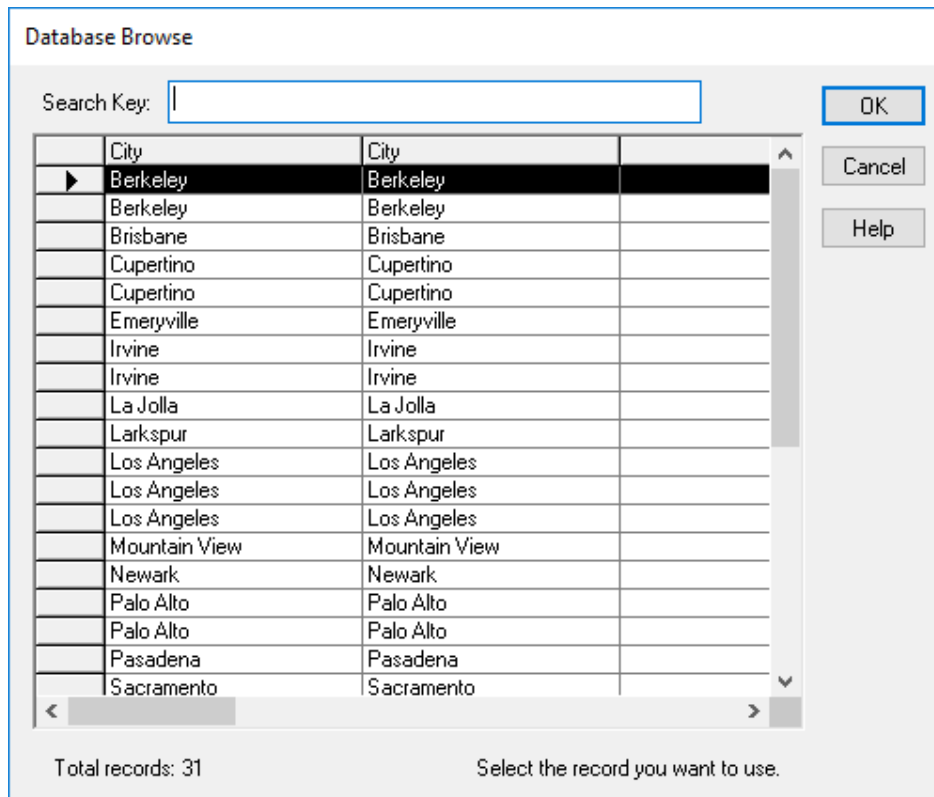
## Environment

Any supported environment

## Explanation

When using an ODBC connection, the primary key field must actually match an entry in the database/Excel spreadsheet by default. If it does not match, then the M1146 error occurs when trying to print this label.

In the example error above, the word *mississippi* was entered in the primary key field. As the error indicates, there is no entry listed with the city mississippi.

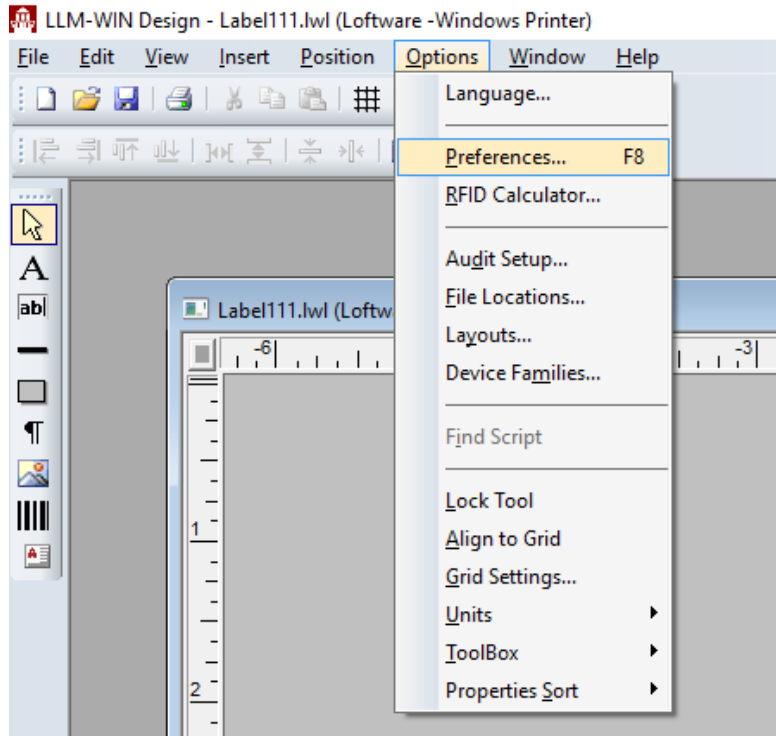


Once the system scans the attached database/Excel spreadsheet for that entry, and it is not found by default the error is thrown.

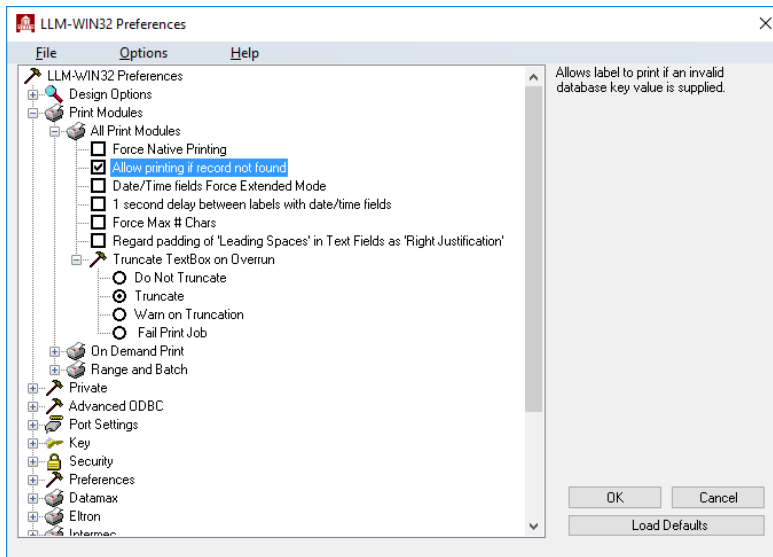
## Solution

There are two solutions

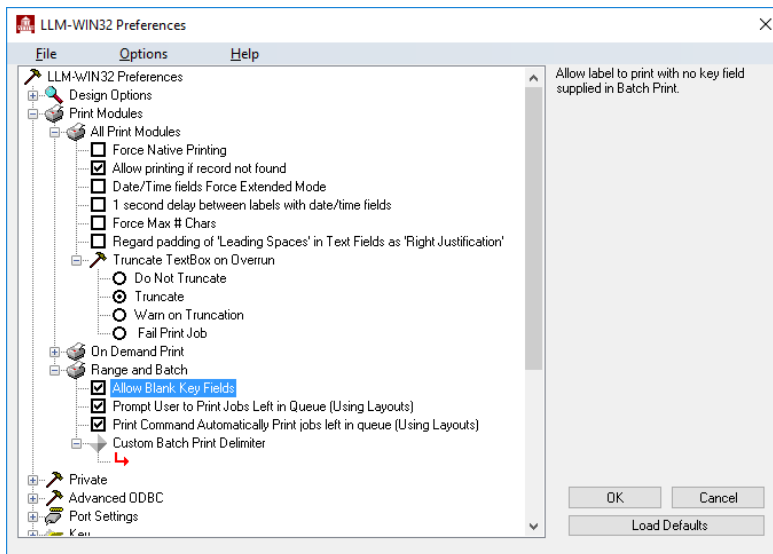
1. Always pass valid data to the primary key field, so that a match is found. If a match is found then the label will print with no errors.
2. If the label needs to be processed with a primary key that does not exist, or is blank in the database/Excel spreadsheet, then certain options have to be turned on under Preferences.
  1. Open Design 32 and click on **Options | Preferences**



2. Expand **Print Modules** and then expand **All Print Modules** and select **Allow printing if record not found**.

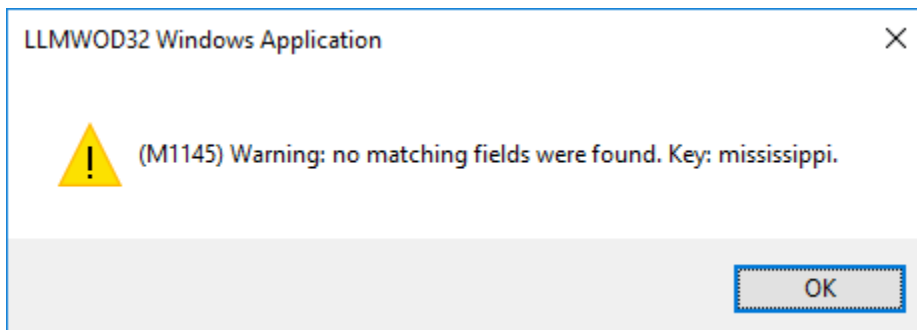


3. Expand the **Range and Batch** section and select **Allow Blank Key Fields** and then press **OK**



4. After making these changes close out of Design 32 and any other Software applications. Also stop and start the LPS Service if using this label with the LPS.

After making these changes and when using the LPS, the label will print with no issues, and print as expected. If using On-Demand Print 32, On-Demand Print Client, and or Range Print 32 you will receive the following warning.



This is just a warning. As soon as OK is selected, the label can and will be processed by the Software Software. This allows a primary key that does not exist in the Database/Excel spreadsheet to print, it also allows the primary key to be blank if the need for a blank primary key exists.

Page:On Demand Print Not Starting from Design32 (Loftware Print Server Family Knowledge Base)

- [design32](#)
- [32](#)
- [llmwod32](#)
- [won't](#)
- [kb-troubleshooting-article](#)
- [demand](#)
- [on](#)
- [start](#)
- [odp32](#)
- [odp](#)
- [print](#)

Page:Datamatrix Error Correction (Loftware Print Server Family Knowledge Base)

- [kb-troubleshooting-article](#)
- [datamatrix](#)
- [error](#)

Page:Using Datamatrix Format ID and Error Correction Level settings (Loftware Print Server Family Knowledge Base)

- [datamatrix](#)
- [format](#)
- [kb-how-to-article](#)
- [error](#)

Page>Error M20094 You Do Not Have Access to Write to the Loftware Labeling Directory (Loftware Print Server Family Knowledge Base)

- [m20094](#)
- [kb-troubleshooting-article](#)
- [error](#)

Page>Error M645 Your System is Configured for Printing Only (Loftware Print Server Family Knowledge Base)

- [m645](#)
- [kb-troubleshooting-article](#)
- [error](#)