

Error M678 Label Not Designed for Selected Device

Message

When attempting to use Design 32's Test Print feature, a dialog box appears with the following error message:

(M678) Label not designed for selected device. Label was designed for the Software *Device Name*.
The currently selected device is the Software *Device Name*.
Configure and select a matching device.

Article Number

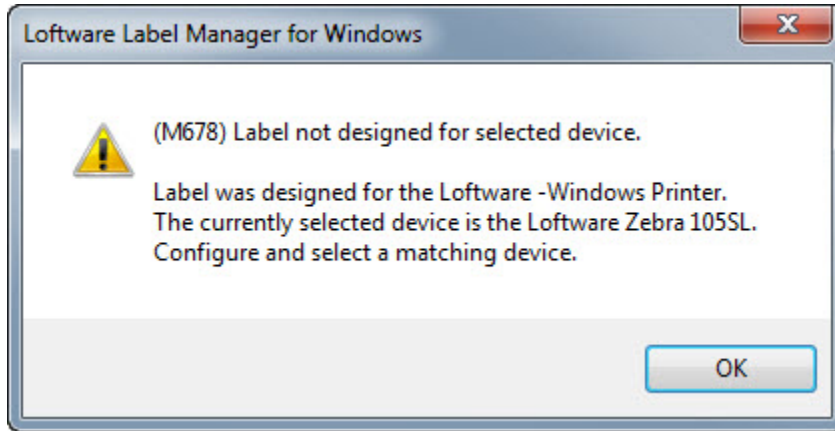
2017041

Versions

Software Label Manager 10.x and higher

Environment

All supported Software Label Manager environments

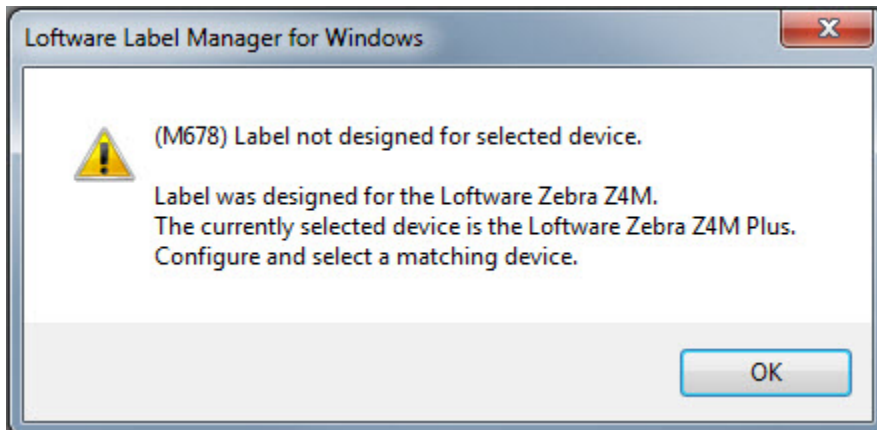


Explanation

In order to use Design 32's Test Print feature, the Manufacturer and Model of the label template you want to Test Print must exactly match the Family & Model of the Device you selected. If they do not match, the (M678) error message will display with the mismatched settings.

There is one exception with templates and devices using the Windows manufacturer/family. If a label template has a Manufacturer of Windows specified, this template can be Test Printed to any Device also having a Family setting of Windows, regardless of the Model displayed.

Sometimes the differences are subtle, such as in the following example. The label template is designed for a Zebra Z4M but the output device specified was a Zebra Z4M **Plus**, which is not an exact match.



Solution

There are two ways to make the label template settings and the device match:

1. Adjust the label template's Manufacturer and Model settings to match the device's Family and Model settings:

1. Launch Design 32 and open the label template in question.
2. Click File > Media Setup (or press F5) to open the template's Label Setup and Properties dialog box.
3. Adjust the Manufacturer and Model settings so they EXACTLY match the Device's Family and Model settings.
4. Click **OK** to close the dialog box.
5. You can now use the Test Print function in Design 32 to submit a test print of this template to the device.

2. Adjust the device's Family and Model settings to match the label template's Manufacturer and Model settings.

1. Launch Design 32 and click File > Devices (or press F6) to open the LLM Device Configuration grid.
2. Adjust the Family and Model of the device in question so they EXACTLY match the label template's Manufacturer and Model settings.
3. Click **OK** to close the LLM Device Configuration grid.
4. You can now open the label template and use the Test Print function in Design 32 to submit a test print of this template to the device.

Related Articles

Page: The Software Print Server Service on Local Computer Started and then Stopped

- [kb-error-message](#)

Page: SAP Interface Log Indicates an "Incomplete request" Error when Processing a Stacked RDI File

- [kb-error-message](#)

Page: Error M1233 Password Serial Number Error

- [kb-error-message](#)

Page: Error M4756 _PRINTERNUMBER Value is Not Valid and M4757 Number is Outside Key Limit

- [kb-error-message](#)

Page: LCD on Zebra Printer Displays OUT OF MEMORY STORING GRAPHIC

- [zebra](#)
- [kb-error-message](#)

Page: Checking Permissions On a Network Drive Using the Run Command

- [permission](#)
- [kb-error-message](#)

Page: LCfSAP Error - Error Calling RFC Module

- [lcfsap](#)
- [kb-error-message](#)

Page: Error Setting Drop Directory: ActiveX Client Control

- [kb-error-message](#)
- [activex](#)

Page: Error 26503: ActiveX Client Control

- [kb-error-message](#)
- [activex](#)

Page: Scan Path Does Not Exist: ActiveX Client Control

- [kb-error-message](#)
- [activex](#)

Page: Monarch Error: 004 or 005

- [kb-error-message](#)
- [monarch](#)

Page:Monarch Error: 101 On Monarch Display

- kb-error-message
- monarch

Page:Getting "Cannot determine path to ConfigPrinters" Error In the Windows Event Log

- event-log
- kb-error-message

Page:Monarch Error: Printer Memory is Full, Error Number 409 On Monarch Display

- kb-error-message
- monarch

Page:Invalid Column Type From ODBC

- kb-error-message
- odbc