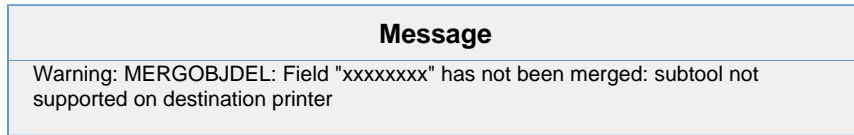


# Error Warning: MERGOBJDEL Subtool Not Supported On Destination Printer

## Message

When a label is converted from one printer to another printer, the label is merged to the new printer. If the target printer model does not support a field from the source printer model, you will see this error when you open the label in Design32.



## Article Number

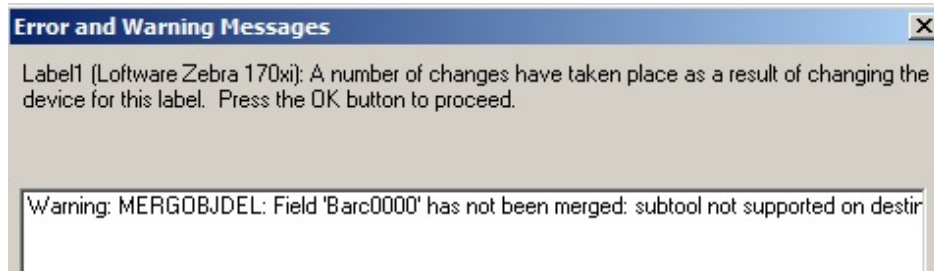
2013098

## Versions

LPS 9.8.0.0

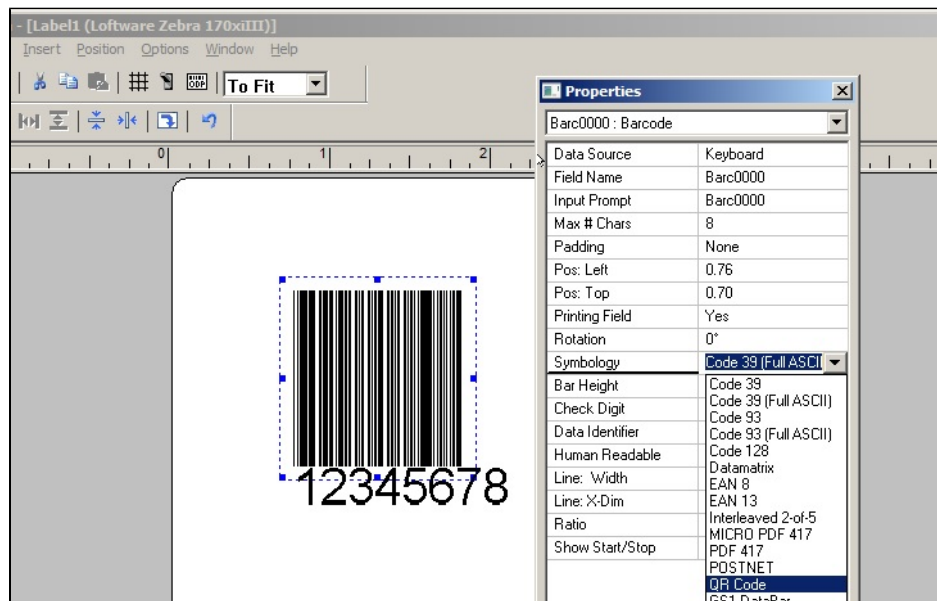
## Environment

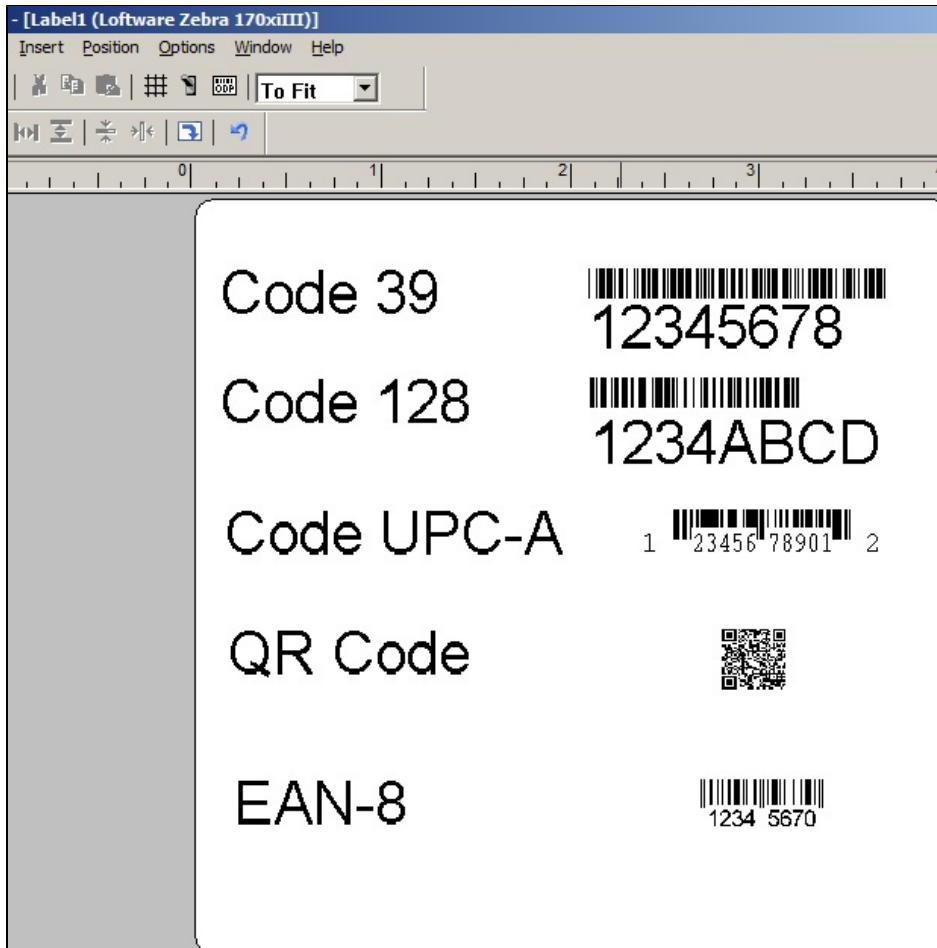
Specific printer models.



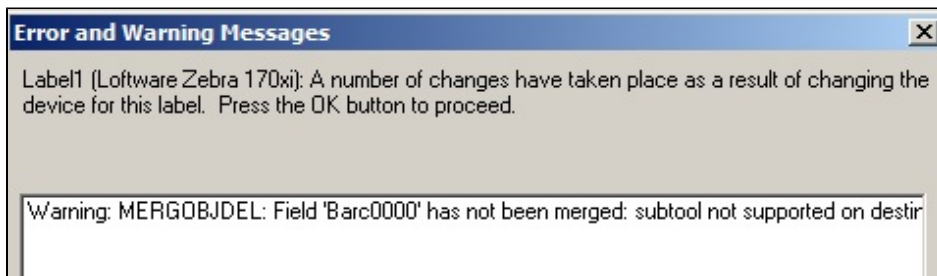
## Example

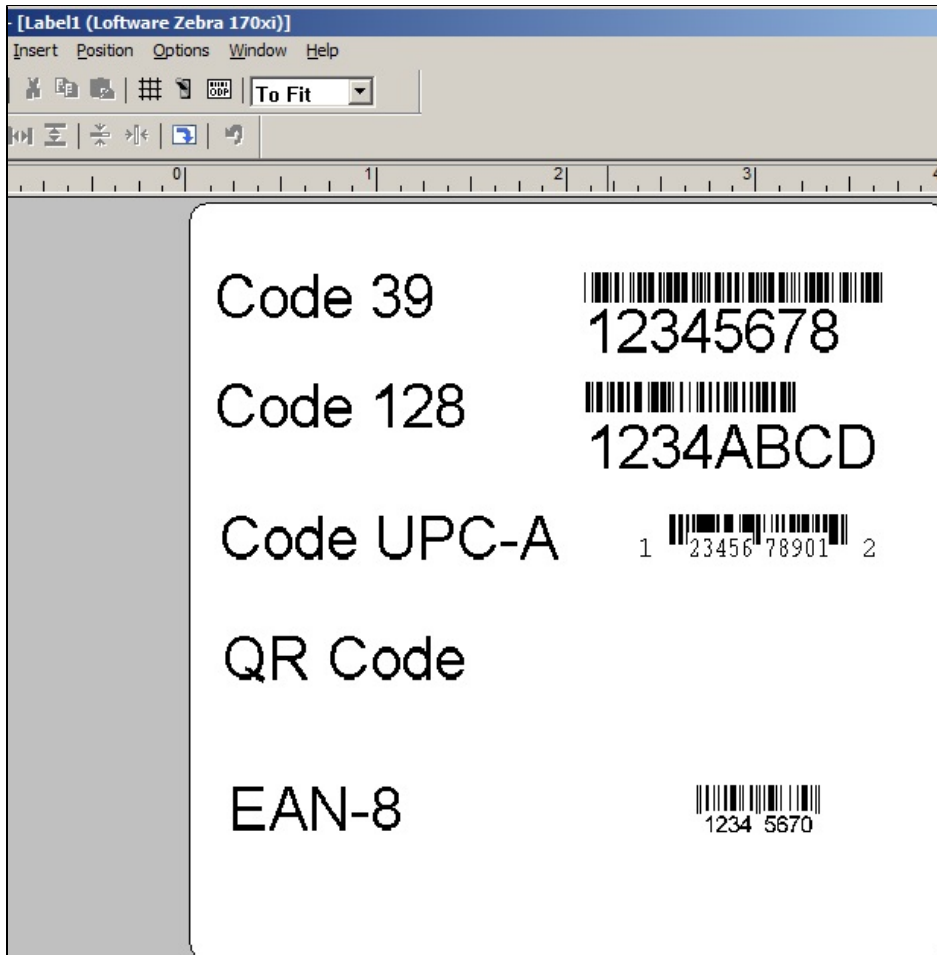
In LPS version 9.8.0.0 and earlier, QR code barcodes are available only if a printer supports it natively. If a label is designed for a Zebra 170xiIII with a QR code, the printer supports the design when the QR code is native to the printer.





If the same designed label is required to print on a 170xi, the normal procedure would be to open the label in Design32 and change the "Configure Label For" setting from 170xiIII to 170xi. When this is done the MERGOBJDEL warning will show, and the barcode will be removed from the label because the printer does not support QR code natively.





**This is the only warning that is received from the designer.** When the label is saved any information or settings associated with the QR barcode will be lost. Setting the printer back to the original model will not restore the missing barcode.

## Solution

It is rare for one model of printer not to support a field from another model of printer, but it can happen. For the example given above Loftware has the ability to generate a QR code as a bitmap and does not require that a printer support the barcode natively. This ability is available in Loftware versions 10.0 and higher.

If you encounter a barcode symbology that is not supported natively, upgrading to 10.0 will allow you to use a printer to support the symbology by creating a bitmap image of the barcode.

If other field types are found that are not supported between printer models, there may not be a software solution, or it may be required to upgrade the printer to a more recent model.

## Related Articles

Page: [QR Code Symbology Known Issues \(Loftware Print Server Family Knowledge Base\)](#)

- [symbology](#)
- [kb-troubleshooting-article](#)
- [code](#)
- [qr](#)

Page: [High ASCII Characters Are Not Printed in a QR Code Barcode \(Loftware Print Server Family Knowledge Base\)](#)

- [character](#)
- [ascii](#)
- [kb-troubleshooting-article](#)
- [printing](#)

- high
- qrcode
- qr
- characters
- print

Page:Print a Barcode With Inversed Color (Loftware Print Server Family Knowledge Base)

- design
- zebra
- kb-how-to-article
- barcode

Page:How To Center a Code 128 Barcode Using Java Script (Loftware Print Server Family Knowledge Base)

- center
- code128
- kb-how-to-article
- barcode

Page:How To Center a Code 39 Full ASCII Barcode Using Java Script (Loftware Print Server Family Knowledge Base)

- center
- code39
- kb-how-to-article
- barcode
- script