

# Force Printing to Pause Between Native Label Prints - Using a Stacked File Drop and Printing to Zebra Printers

## Problem

When dropping a CSV file to the scan path the user would like to pause the printer automatically between file drops.

## Explanation

Currently today, Loftware will process any file that is dropped in the scan path directory. If the user would like to change label stock after every drop file they need to wait for the printing to complete, change the label stock and then drop another file, which can be valuable time wasted.

**NOTE: This will not work if you are dropping files for extending printing.**

## Solution

Specify a custom ZPL string in the label to send a pause request after every label is printed.

## Article Number

2015015

## Versions

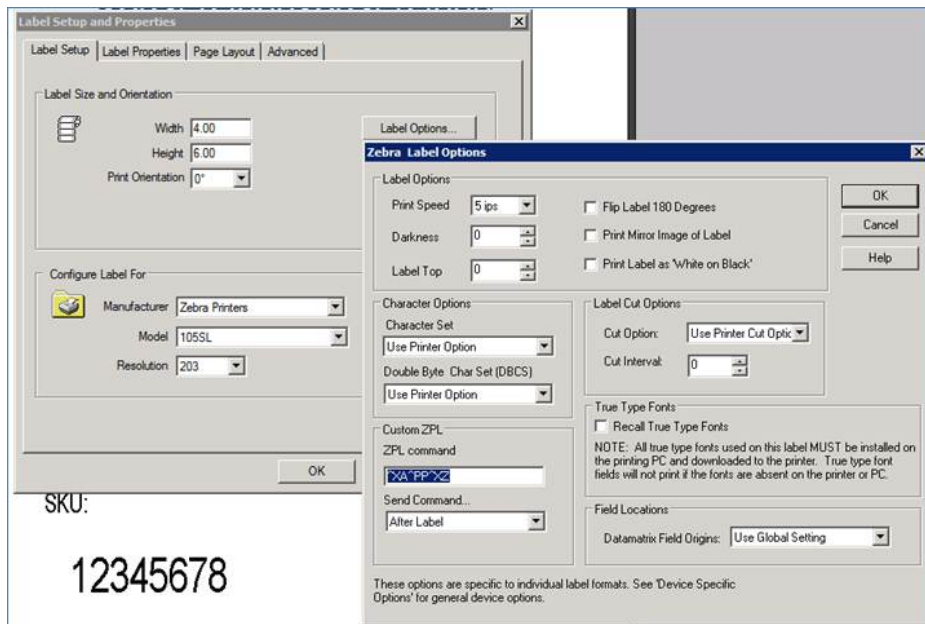
All supported LPS family product versions.

## Environment

All supported installation environments.

### Steps

1. Open Label Design in LLM (Design32).
2. Click on "File" and "Media Setup".
3. Select "Label Options" under the "Label Setup" tab.
4. In the Label Option window, down towards the bottom left corner in the "Custom ZPL" area, type in the following ZPL Command: `^XA ^PP ^XZ`
5. Also select "After label" for the "Send Command" field.
6. Click "OK" out of the "Label Options" as well as the "Media Setup" screens.
7. Save the Label.



## Related Articles

[Page:Failed to open specified Label Format \(\\_FORMAT\) One or more fields have formulas with a circular reference.](#)

[Page:Cannot Print Greater-Than \(>\) Characters in Code-128 Barcode When Using Zebra Printer](#)

[Page>Error \(M4850\) The filesystem you are scanning does not support win32 File Change Notification Events](#)

[Page>Error M4722 There was an Error While Attempting to Change the Service Configuration](#)

[Page:Errors \(M4772\) \\*PRINTERNUMBER value is not valid! \(M4774\) Must be a positive \[nonzero\] number!](#)