

Configuration Utility: General Tab

Description

This page provides information on the components located in the **General** tab of the Software Print Server Configuration Utility.

Information

LPS runs in memory as a service; therefore, most mapped drive letters, due to new stringent security standards, will not be accessible. When configuring additional scan directories, instead of using a mapped drive (M:\drop), use the Universal Naming Convention (UNC) path (\ws1\drop).

Article Number

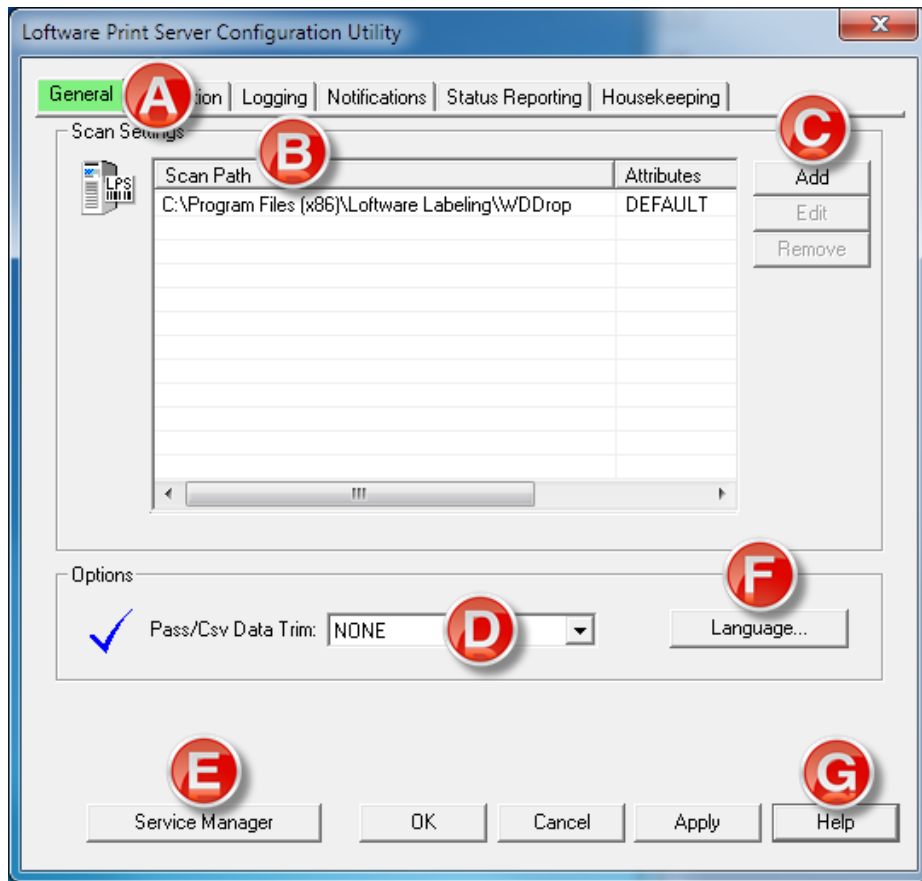
2017085

Versions

LPS 10.2

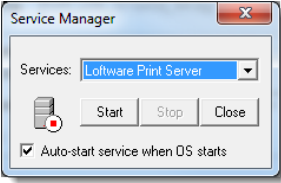
Environment

Any supported LPS Family product environment



Before Scan directories can be configured or added, the LPS (Windows) service must be stopped.

	General Tab	Description
A	Scan Settings	Allows the user to set up additional scan directories for programs that cannot use the default WDDrop folder.
B	Multi-Scan Grid	File interface that allows a user to configure custom scan directories.

C	Add Edit Remove	Adding a scan directory Edit a preexisting scan directory Remove a scan directory
D	Pass/CSV Data Trim	If data contains leading or trailing spaces, you can use this setting to trim them. Valid for .pas file only.
E	Service Manager	<p>Starts or stops the Loftware Print Server in Service Mode.</p>  <p>Auto-start: Select to enable the service to run when the OS starts.</p>
F	Language	Select the default language for the Loftware Application. Can be made on a per-user basis. Controls the user interface only and does not affect LPS performance.
G	Help	Access the LPS Configuration Utility Help.

Related Articles

Page:Configuration Utility: Directory Setup

- [setup](#)
- [kb-information-article](#)
- [scanpath](#)
- [configuration](#)
- [directory](#)

Page:Unable To Obtain UNC Equivalents When Starting LPS (Formerly WatchDog-NT)

- [watchdog-nt](#)
- [layoutfiles](#)
- [autoconvert](#)
- [uncpath](#)
- [labelfiles](#)
- [kb-troubleshooting-article](#)
- [scanpath](#)
- [unc](#)