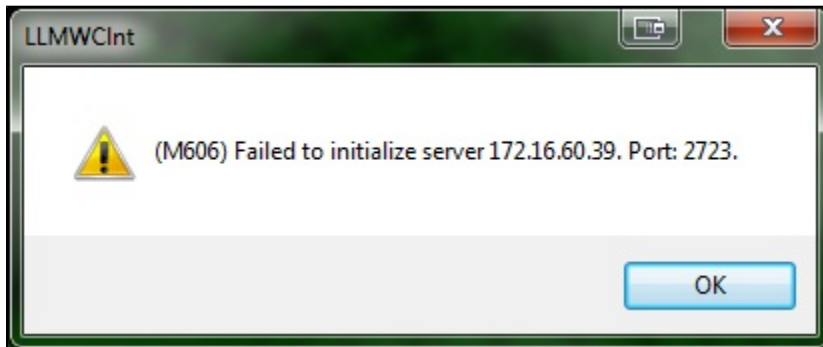


Error M606 Failed to Initialize Server

Message

A connection error is displayed when running the On Demand Print Client:

(M606) Failed to initialize server 10.10.10.10. Port: 2723.



Explanation

The M606 error message could be caused by all client seats being used or it could be caused by a firewall issue - security has increased considerably with the onset of Hosted or Cloud environments and later releases of Microsoft Operating systems.

Solution

There are two possible solutions depending on the cause of the error. First, check how many clients seats are in use, then change the firewall settings if needed.

1. To check how many client seats are in use, run the following on the Software Labeling root directory:
WDPING <LOCALHOST> -i
2. If all client seats are taken, contact Software. If there are remaining unused seats, continue with the following steps.
Note: The following steps are for users on a local Windows Server 2008 for LPS and Clients connecting remotely, however the port rules apply to all environments.
3. Go to **Control Panel > Firewall > Advanced > Inbound Rules**.
4. Create a **New Rule** with the following:
Rule Type: **Port**
Protocol and Ports: **TCP | Specific local ports: 2723**
Action: **Allow the connection**
Profile: **Domain**, or **Domain** and **Private** if you want to use non domain systems as clients
Name: Enter a name, for example *LPS Client TCP/IP Inbound*.
5. Click **Finish**.

Related Articles

Page: The Software Print Server Service on Local Computer Started and then Stopped

- [kb-error-message](#)

Page: SAP Interface Log Indicates an "Incomplete request" Error when Processing a Stacked RDI File

- [kb-error-message](#)

Page: Error M1233 Password Serial Number Error

- [kb-error-message](#)

Article Number

2017026

Versions

All supported LPS family product versions

Environment

Any supported LPS Family product environment

Page:Error M4756 _PRINTERNUMBER Value is Not Valid and M4757 Number is Outside Key Limit

- kb-error-message

Page:LCD on Zebra Printer Displays OUT OF MEMORY STORING GRAPHIC

- zebra
- kb-error-message