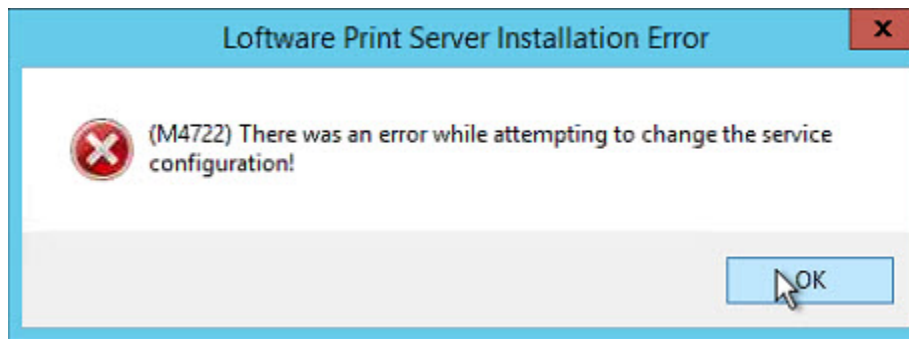


# Error M4722 There was an Error While Attempting to Change the Service Configuration

## Message

While trying to install the Software Print Server (LPS) service, the **Software Print Server Installation Error** dialog box displays with the following error:

(M4722) There was an error while attempting to change the service configuration!



## Article Number

2017139

## Versions

All supported LPS family product versions

## Environment

Windows Server 2008 R2

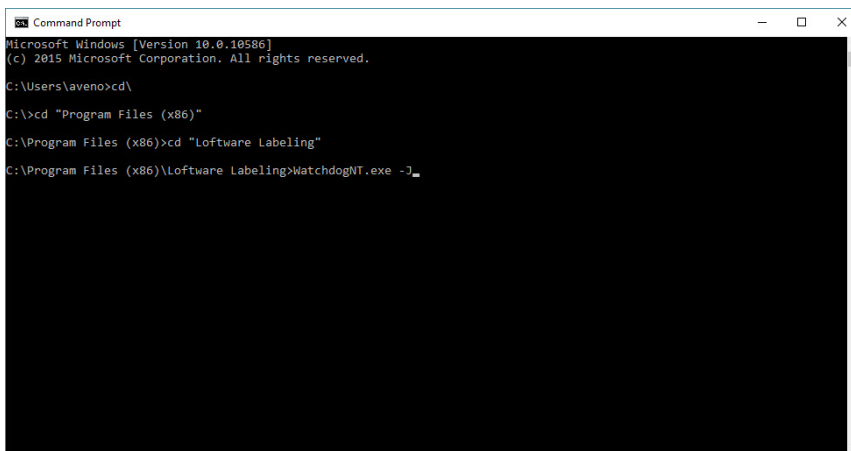
## Explanation

The cause of the above error could be caused by a permission problem.

## Solution

1. Open a Command Prompt window and navigate to the Software Labeling directory.
2. Execute the following command:

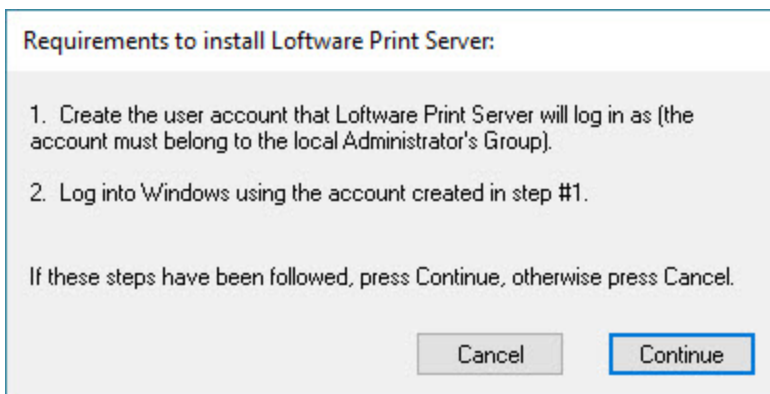
```
WatchDogNT.exe -J
```



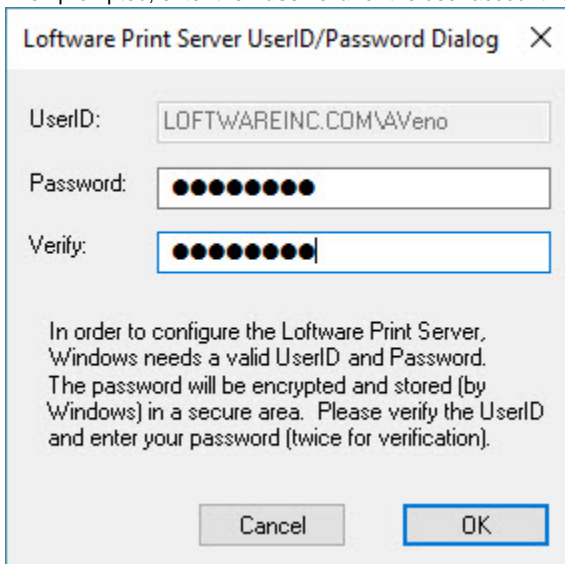
```
Command Prompt
Microsoft Windows [Version 10.0.10586]
(c) 2015 Microsoft Corporation. All rights reserved.

C:\Users\aveno>cd \
C:\>cd "Program Files (x86)"
C:\Program Files (x86)>cd "Software Labeling"
C:\Program Files (x86)\Software Labeling>WatchdogNT.exe -J
```

3. In the **Requirements to install Software Print Server** dialog box, click **Continue** if the account that will run the Software Print Server Service is already created.

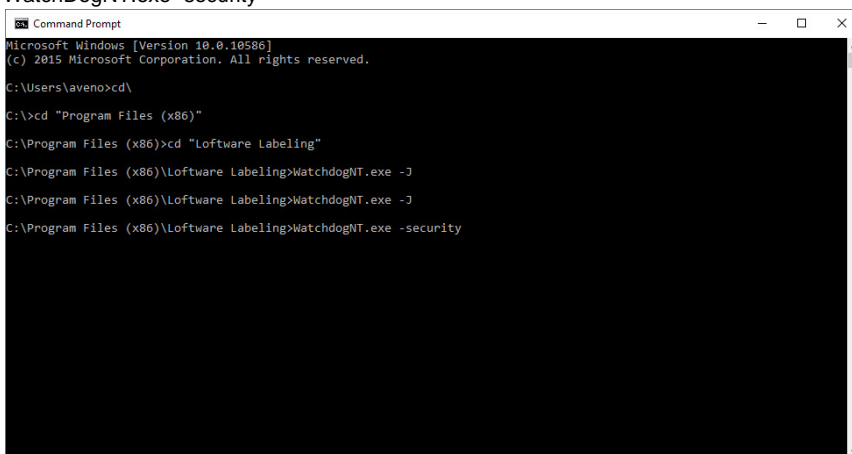


4. When prompted, enter the **Password** for the user account listed in the dialog box.



5. Click **OK**.
6. At the Command Prompt, execute the following command:

WatchDogNT.exe -security



7. Execute **Software Print Server Setup.exe** and run a **Repair** on the install. This should successfully complete the Software Print Server installation.

## Related Articles

Page:Error M1111 or M1144 Error from ODBC

- [kb-error-message](#)
- [m1144](#)

- [odbc](#)
- [m1111](#)

Page: [Error M1348 Windows printers can only be configured in the Assigned Section](#)

- [assigned](#)
- [unassigned](#)
- [m1348](#)
- [m1353](#)
- [kb-error-message](#)

Page: [Error M4722 There was an Error While Attempting to Change the Service Configuration](#)

- [m4722](#)
- [kb-troubleshooting-article](#)
- [configuration](#)
- [service](#)
- [error](#)

Page: [PostgreSQL Service Starts Then Immediately Stops](#)

- [stop](#)
- [kb-error-message](#)
- [start](#)
- [postgresql](#)
- [service](#)
- [error](#)

Page: [Error End Tag Label Does Not Match the Start Tag Label](#)

- [tag](#)
- [kb-error-message](#)
- [xml](#)