

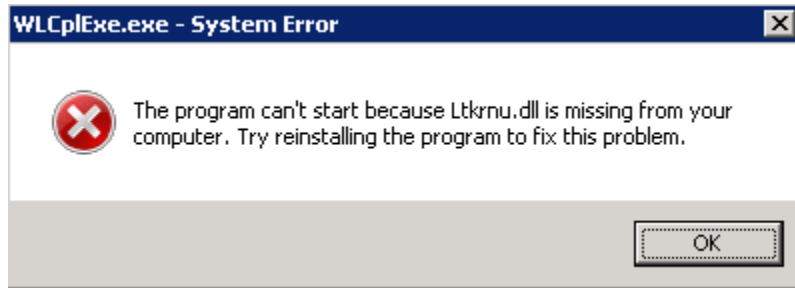
Error Web Listener does not start - WLCplExe.exe - System Error

Problem

When trying to start the Web Listener-Configuration utility, the following error is encountered:

WLCplExe.exe - System Error

The program can't start because the Ltkrnu.dll is missing from your computer. Try reinstalling the program to fix this problem.



Article Number

2018002

Versions

12.0.0.0

Environment

All supported LPS 12.0.0.0 environments

Explanation

The core 12.0.0.0 **LPS Client Install** files do not have the correct set of DLL files to run the Web Listener-Configuration utility.

Solution

This has been corrected in Loftware Print Server 12.0.1. Click on the following link to access the Loftware downloads section (requires a **userid** and **password** from **Loftware Customer Account Management**)

- <https://www.loftware.com/support/upgrades>

Related Articles

Page:Using Datamatrix Format ID and Error Correction Level settings

Page:Error M4722 There was an Error While Attempting to Change the Service Configuration

Page:PostgreSQL Service Starts Then Immediately Stops

Page:Error M11901 and Error M61426: Design32 Fails on Label File Open or Save

Page:Error M4803 Failed to Connect to Batch Print Server, Class Not Registered