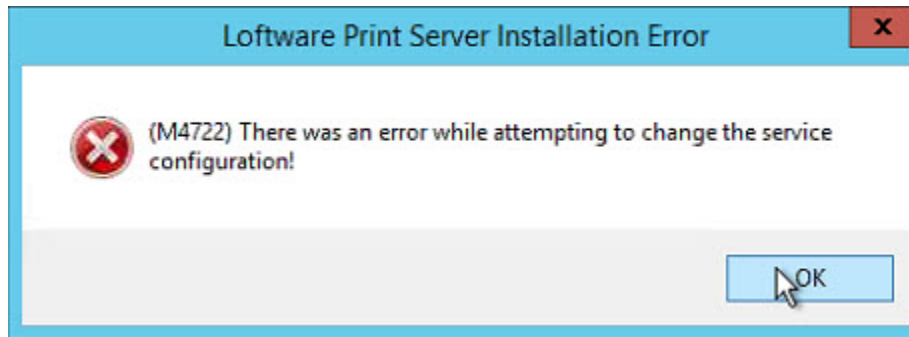


Error M4722 There was an Error While Attempting to Change the Service Configuration

Message

While trying to install the Software Print Server (LPS) service, the **Software Print Server Installation Error** dialog box displays with the following error:

(M4722) There was an error while attempting to change the service configuration!



Article Number

2017139

Versions

All supported LPS family product versions

Environment

Windows Server 2008 R2

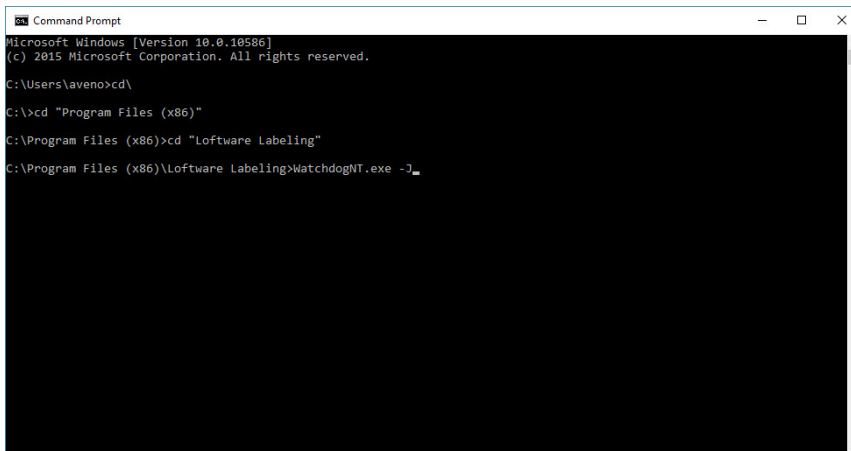
Explanation

The cause of the above error could be caused by a permission problem.

Solution

1. Open a Command Prompt window and navigate to the Software Labeling directory.
2. Execute the following command:

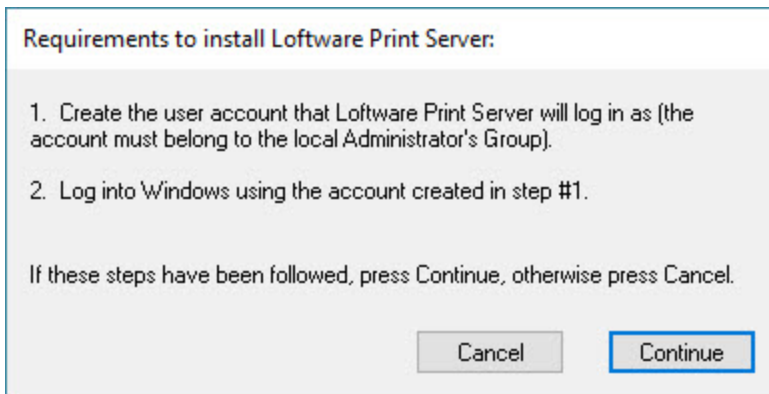
```
WatchDogNT.exe -J
```



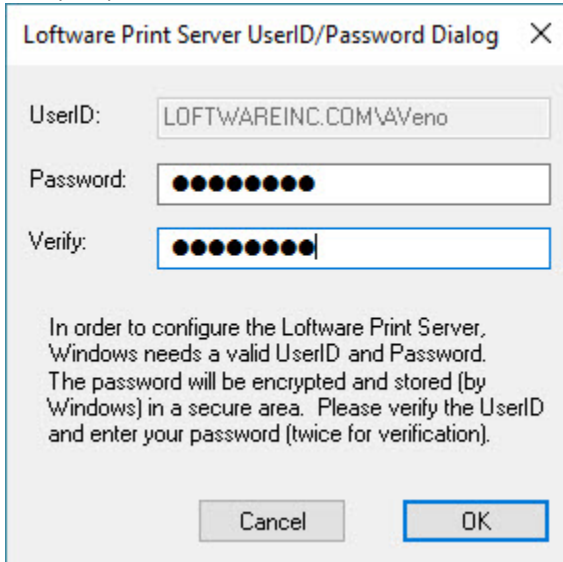
```
Command Prompt
Microsoft Windows [Version 10.0.10586]
(c) 2015 Microsoft Corporation. All rights reserved.

C:\Users\aveno>cd \
C:\>cd "Program Files (x86)"
C:\Program Files (x86)>cd "Software Labeling"
C:\Program Files (x86)\Software Labeling>WatchdogNT.exe -J
```

3. In the **Requirements to install Software Print Server** dialog box, click **Continue** if the account that will run the Software Print Server Service is already created.

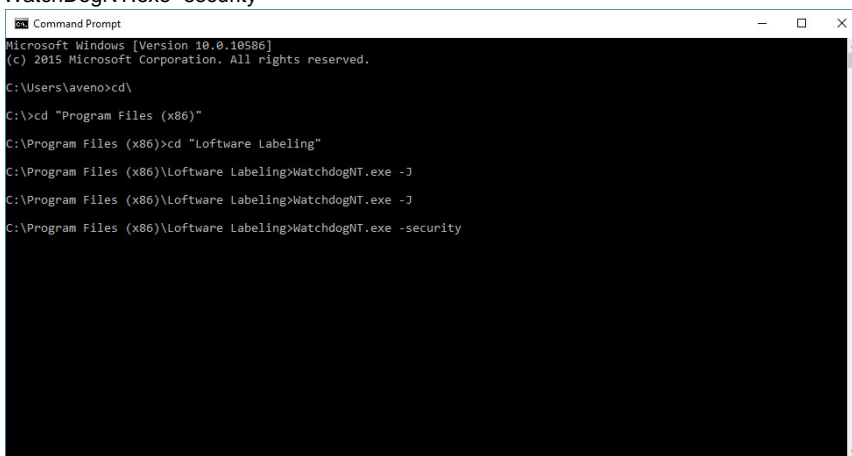


4. When prompted, enter the **Password** for the user account listed in the dialog box.



5. Click **OK**.
6. At the Command Prompt, execute the following command:

WatchDogNT.exe -security



7. Execute **Software Print Server Setup.exe** and run a **Repair** on the install. This should successfully complete the Software Print Server installation.

Related Articles

Page:Error M1111 or M1144 Error from ODBC

- [kb-error-message](#)
- [m1144](#)

- [odbc](#)
- [m1111](#)

Page: [Error M1348 Windows printers can only be configured in the Assigned Section](#)

- [assigned](#)
- [unassigned](#)
- [m1348](#)
- [m1353](#)
- [kb-error-message](#)

Page: [Error M4722 There was an Error While Attempting to Change the Service Configuration](#)

- [m4722](#)
- [kb-troubleshooting-article](#)
- [configuration](#)
- [service](#)
- [error](#)

Page: [PostgreSQL Service Starts Then Immediately Stops](#)

- [stop](#)
- [kb-error-message](#)
- [start](#)
- [postgresql](#)
- [service](#)
- [error](#)

Page: [Error End Tag Label Does Not Match the Start Tag Label](#)

- [tag](#)
- [kb-error-message](#)
- [xml](#)