

# Error M1111 or M1144 Error from ODBC

## Message

When running On-Demand Print 32 and or the On-Demand Print Client, and selecting the ellipse button to run the query to the database, you receive the following two errors.

Message
Windows Application (M1111) Error from ODBC (Opening recordset range): Syntax error in FROM clause.
Windows Application (M1144) Error from ODBC (opening recordset2): Syntax error in FROM clause. Please verify the availability of the database and the accuracy of the Advanced Connection String

## Article Number

2013041

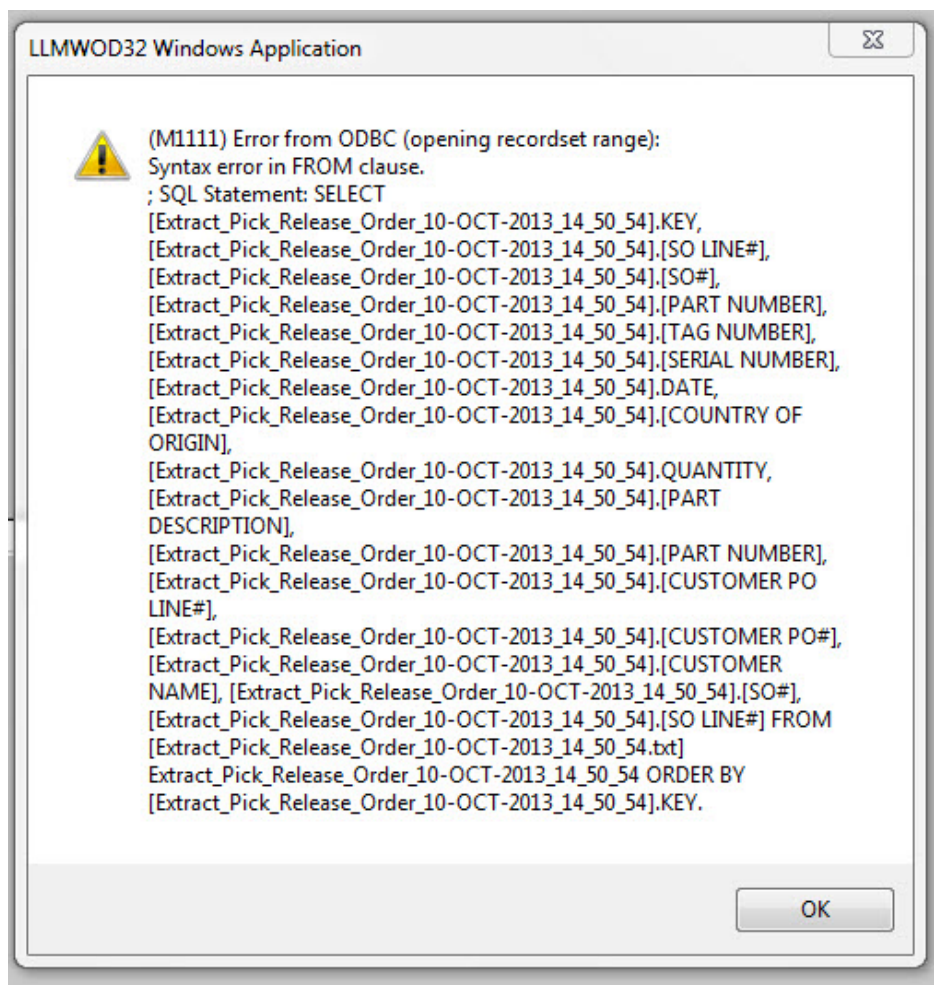
## Versions

LPS / LLM 10.1.0.21

## Environment

All supported Windows installation environments.

Example:



## Explanation

One of these errors will happen every time you attempt to pull data from a CSV or Text file via an ODBC connection where the filename contains characters not considered valid by ODBC. You will get the M1111 error when you attempt to browse the database using the ellipse button and M1144 when you enter a value and attempt to change field focus, making it impossible to print the label.

## Solution

1. Close the CSV file in Excel.
2. Open a new blank Excel file.
3. Select the **Data** tab.
4. Select **From Text**.
5. Select the **transactions.csv** file and select **Import**.
6. In the Text Import Wizard, select **Delimited** and **My data has headers**. Select **Next**.
7. Uncheck **Tab**, select **Comma**, and select **Next**.
8. Select Package Tracking Number column.
9. Select **Text** and select **Finish**.
10. In the Import Data window, select **OK**.

## Related Articles

Page:Error When Trying To Retrieve Records From Text Database (Loftware Print Server Family Knowledge Base)

- database
- kb-error-message
- odbc

Page:Connecting To a Password-Protected Database Through the Label Design (Loftware Print Server Family Knowledge Base)

- database
- password
- kb-troubleshooting-article
- demand
- on
- odbc
- print
- protected

Page:How to Install 32 bit ODBC Driver for Excel 2010 and Later (xlsx) (Loftware Print Server Family Knowledge Base)

- msoffice
- office
- access
- 32bit
- odbc
- kb-how-to-article
- excel
- sql
- dbase
- missing
- microsoft

Page:Error M1112 from ODBC Data Source Name Not Found and No Default Driver Specified (Loftware Print Server Family Knowledge Base)

- tracing
- 1112
- label
- database
- kb-troubleshooting-article
- 32bit
- opening
- odbc
- dsn
- datasource
- m1112

Page:Missing Fields on an Intermec 3400 (Loftware Print Server Family Knowledge Base)

- kb-troubleshooting-article
- field
- missing

Page:Warning: NOKEYTOREF: Database-key field 'Text0000' has no data fields (Loftware Print Server Family Knowledge Base)

- database
- key
- kb-error-message
- field

Page:Error M1141 Unable to Open Database (Loftware Print Server Family Knowledge Base)

- database
- kb-troubleshooting-article

- access
- microsoft

Page: [Software Oracle Connector Service Not Available After Installing Software Oracle Connector \(Loftware Print Server Family Knowledge Base\)](#)

- unavailable
- connector
- install
- kb-troubleshooting-article
- oracle
- missing
- service

Page: [Entire Label Does Not Print on Intermec PM43 \(Loftware Print Server Family Knowledge Base\)](#)

- label
- kb-troubleshooting-article
- pm43
- length
- incomplete
- ipl
- missing

Page: [Toolbar Has Been Closed and Will Not Open Back Up \(Loftware Print Server Family Knowledge Base\)](#)

- kb-troubleshooting-article
- not
- tool
- closed
- bar
- coming
- disappeared
- back
- missing

Page: [Automatically Linking Labels To Specific Databases \(Loftware Print Server Family Knowledge Base\)](#)

- odbc
- kb-how-to-article

Page: [Unwanted Decimal Points Or Places In Excel \(Loftware Print Server Family Knowledge Base\)](#)

- odbc
- excel

Page: [Database Locked When Using On Demand Or Range Print \(Loftware Print Server Family Knowledge Base\)](#)

- kb-troubleshooting-article
- odbc

Page: [Invalid Column Type From ODBC \(Loftware Print Server Family Knowledge Base\)](#)

- kb-error-message
- odbc

Page: [Tables Not Displaying Under DSN In Data Source Dialog Box \(Loftware Print Server Family Knowledge Base\)](#)

- kb-troubleshooting-article
- odbc
- dsn