

# Error M1156 An error occurred drawing symbol

## Message

Datamatrix barcode is not printing on the label.

(M1156) An error occurred drawing symbol.

## Article Number

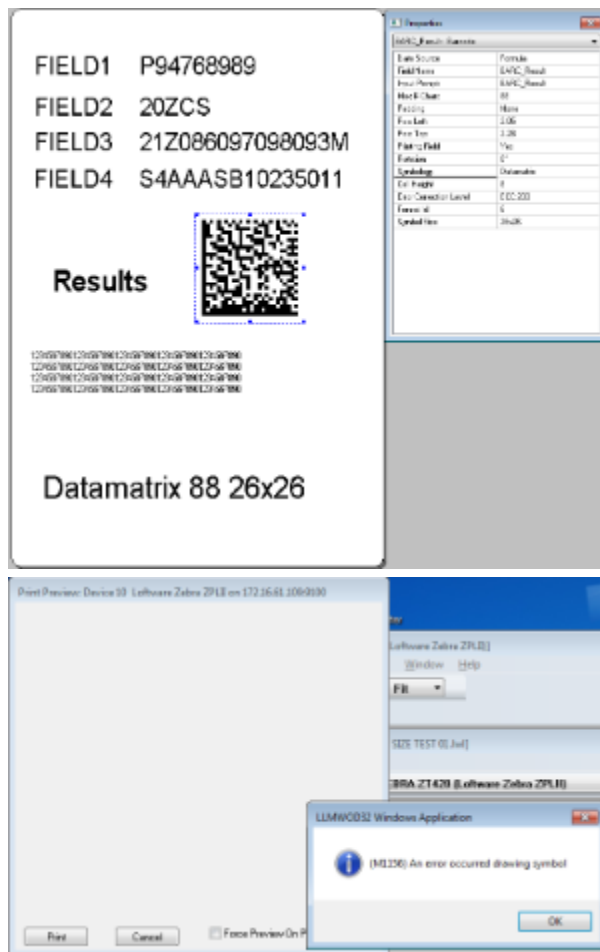
2016044

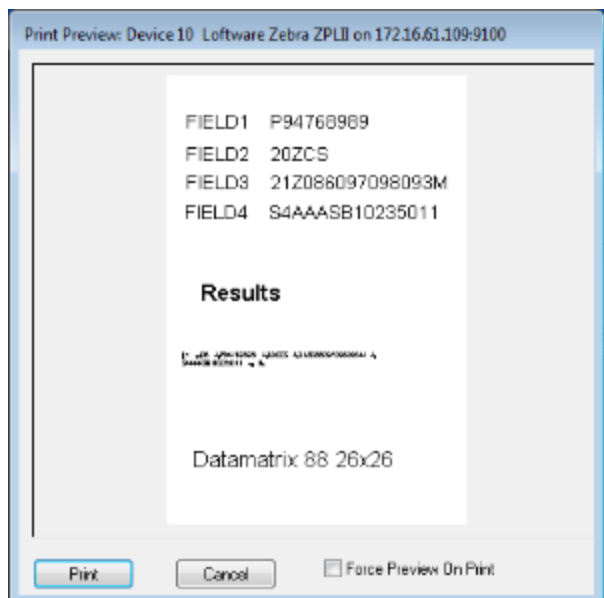
## Versions

## Environment

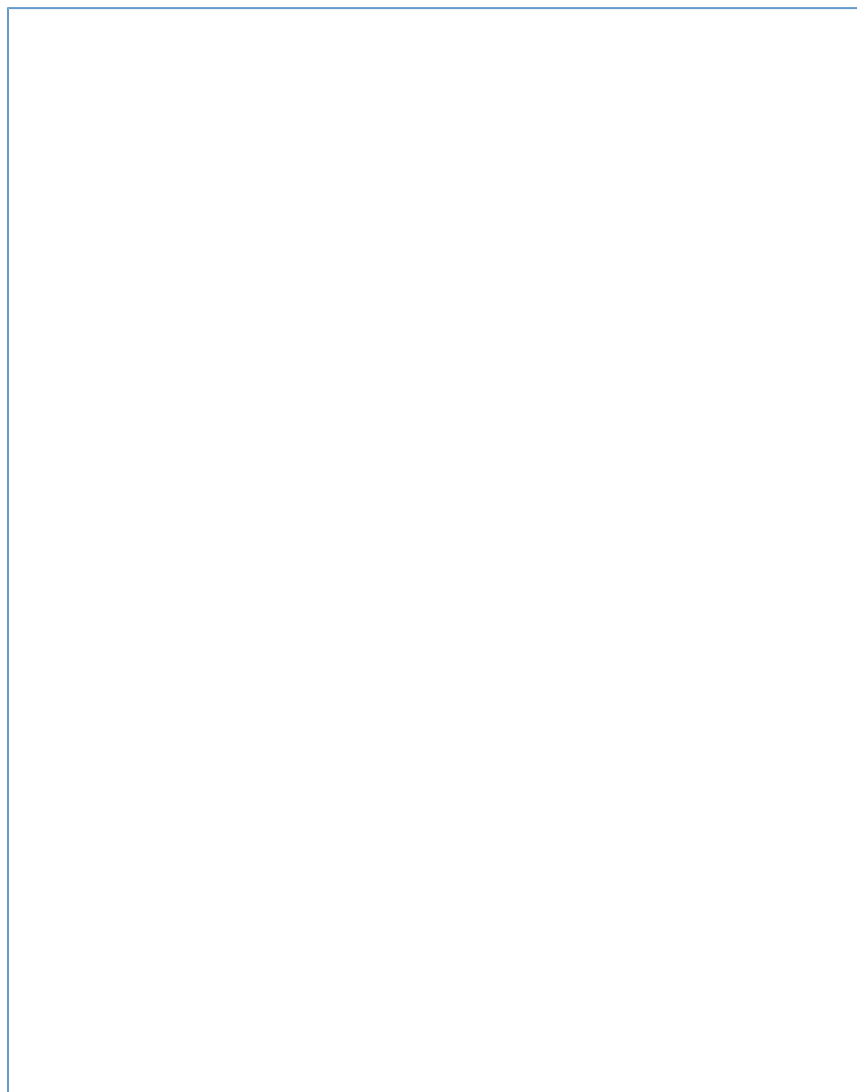
## Explanation

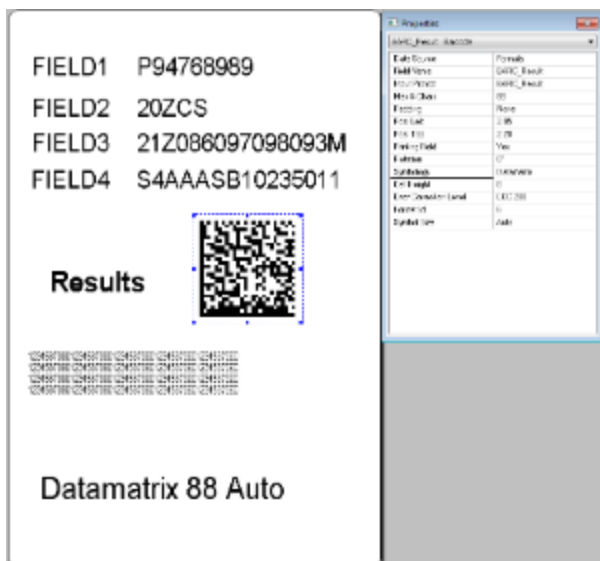
When trying to generate a Datamatrix barcode that will fit in a small area on the label the Datamatrix barcode stops printing on the label. During label development Symbol Size Auto was used first. This caused Datamatrix barcode to print too large. The fixed Datamatrix symbol sizes were tried to better size the Datamatrix barcode. The (M1156) An Error occurred drawing the symbol popup is displayed. At this point the Datamatrix barcode stopped printing on the label.



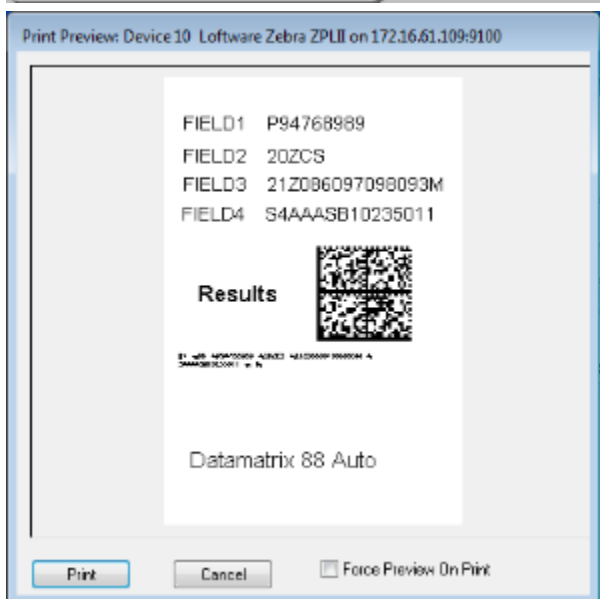


## Solution

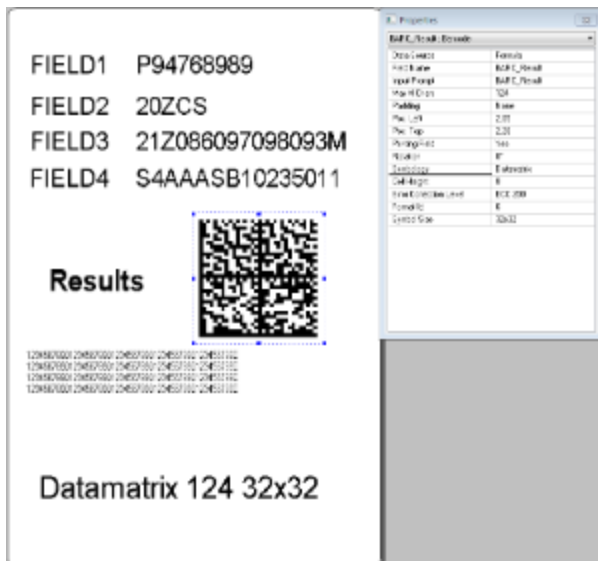




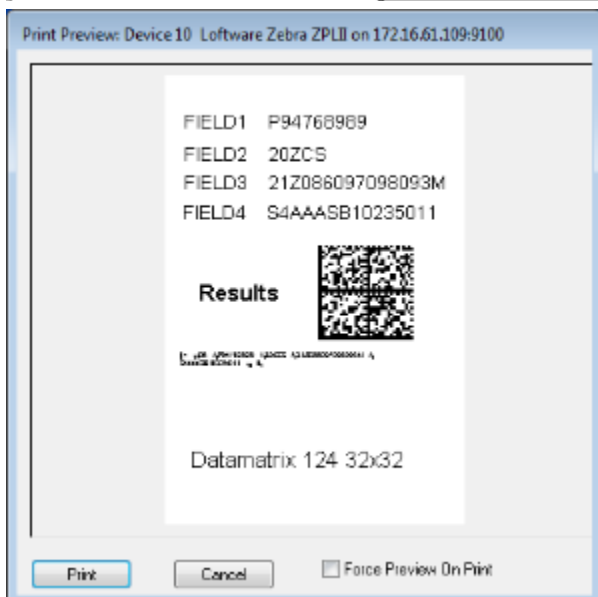
1.



Solution 1) Change the Symbol size back to Auto and reduce the cell size of the Datamatrix barcode to suit your size requirements.



2.



Solution 2) Change the Symbol size large enough to handle the data and reduce the cell size of the Datamatrix barcode to suit your size requirements.

The following are sample labels used to reflect the customer's issue.

[DATAMATRIX SIZE TEST.lwl](#)   [DATAMATRIX SIZE TEST 01.lwl](#)   [DATAMATRIX SIZE TEST 02.lwl](#)

## Related Articles

Page: [Error M1156 An error occurred drawing symbol \(Loftware Print Server Family Knowledge Base\)](#)

- [2d](#)
- [symbol](#)
- [label](#)
- [auto](#)
- [kb-error-message](#)
- [datamatrix](#)
- [size](#)
- [fixed](#)

Page: [Reserved Field Name For Fixed-Sized Datamatrix Symbols \(Loftware Print Server Family Knowledge Base\)](#)

- [symbols](#)
- [datamatrix](#)

- [kb-how-to-article](#)

Page:[Datamatrix Error Correction \(Loftware Print Server Family Knowledge Base\)](#)

- [kb-troubleshooting-article](#)
- [datamatrix](#)
- [error](#)

Page:[Create a Datamatrix symbol with cell height greater than 20 pixels \(Loftware Print Server Family Knowledge Base\)](#)

- [height](#)
- [pixels](#)
- [datamatrix](#)
- [kb-how-to-article](#)

Page:[Configure a Datamatrix Symbol to a Specific mil Size \(Loftware Print Server Family Knowledge Base\)](#)

- [symbology](#)
- [datamatrix](#)
- [mil](#)
- [kb-how-to-article](#)

Page:[Using Datamatrix Format ID and Error Correction Level settings \(Loftware Print Server Family Knowledge Base\)](#)

- [datamatrix](#)
- [format](#)
- [kb-how-to-article](#)
- [error](#)

Page:[How to Determine a Datamatrix Bar Code's Height in Mils \(Loftware Print Server Family Knowledge Base\)](#)

- [height](#)
- [mils](#)
- [datamatrix](#)
- [bar](#)
- [kb-how-to-article](#)
- [code](#)

Page:[The Loftware Print Server Service on Local Computer Started and then Stopped \(Loftware Print Server Family Knowledge Base\)](#)

- [kb-error-message](#)

Page:[SAP Interface Log Indicates an "Incomplete request" Error when Processing a Stacked RDI File \(Loftware Print Server Family Knowledge Base\)](#)

- [kb-error-message](#)

Page:[Error M1233 Password Serial Number Error \(Loftware Print Server Family Knowledge Base\)](#)

- [kb-error-message](#)

Page:[Error M4756 \\_PRINTERNUMBER Value is Not Valid and M4757 Number is Outside Key Limit \(Loftware Print Server Family Knowledge Base\)](#)

- [kb-error-message](#)

Page:[LCD on Zebra Printer Displays OUT OF MEMORY STORING GRAPHIC \(Loftware Print Server Family Knowledge Base\)](#)

- [zebra](#)
- [kb-error-message](#)

Page:[Checking Permissions On a Network Drive Using the Run Command \(Loftware Print Server Family Knowledge Base\)](#)

- [permission](#)
- [kb-error-message](#)

Page:[LCfSAP Error - Error Calling RFC Module \(Loftware Print Server Family Knowledge Base\)](#)

- [lcsap](#)
- [kb-error-message](#)

Page:[Error Setting Drop Directory: ActiveX Client Control \(Loftware Print Server Family Knowledge Base\)](#)

- [kb-error-message](#)
- [activex](#)